

Title: \div or \times ... Let's figure it out

Date: _____

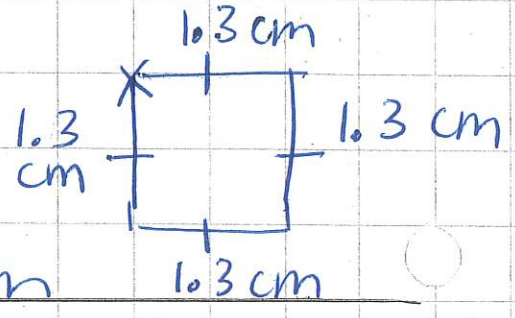
Evaluate. Create PROPORTIONS.

all-around total 4 sides

ex#1 The perimeter of a square is 5.2 cm. What is the length of each side?

$$\begin{array}{r}
 \text{4 sides} \quad \div 4 \quad \text{1 side} \\
 \hline
 5.2 \text{ cm} \quad \div 4 \quad ? \\
 \hline
 1.3 \text{ cm}
 \end{array}$$

$$\begin{array}{r}
 1.3 \\
 4 \overline{) 5.2} \\
 \underline{-4} \\
 12
 \end{array}$$

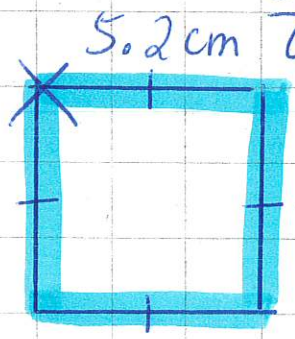


final answer: Each side is 1.3 cm

ex#2 The length of each side of a square is 5.2 cm. What is the perimeter?

$$\begin{array}{r}
 \text{1 side} \quad \times 4 \quad \text{4 sides} \\
 \hline
 5.2 \text{ cm} \quad \times 4 \quad ? \\
 \hline
 20.8 \text{ cm}
 \end{array}$$

$$\begin{array}{r}
 \cancel{1.3} \quad \leftarrow \text{not } \div \\
 4 \overline{) 5.2} \\
 \underline{-4} \\
 12 \\
 \times 4 \\
 \hline
 20.8
 \end{array}$$



final answer: The perimeter is 20.8 cm.

Solve, Create Proportions.

① A monthly bus pass costs \$40. How much is it for 12 months (which is a year).

$$\begin{array}{l} \underline{1 \text{ month}} \quad \times 12 \quad \underline{12 \text{ months}} \\ \$40 \quad \times 12 \quad ? \\ \quad \quad \quad \quad \quad \quad \$480 \end{array}$$

$$\begin{array}{r} 40 \\ \times 12 \\ \hline 80 \\ + 40 \\ \hline \$480 \end{array}$$

After final answer: One year you will have paid \$480! ^{12 bus passes.}

② A restaurant uses 10000 kg of potatoes in 4 weeks. How many kg of potatoes are used each week?

$$\begin{array}{l} \underline{4 \text{ weeks}} \quad \div 4 \quad \underline{1 \text{ week}} \\ 10,000 \text{ kg} \quad \div 4 \quad ? \\ \quad \quad \quad \quad \quad \quad 2500 \text{ kg} \end{array}$$

$$\begin{array}{r} 02500 \\ \hline 4) 10000 \\ - 0 \downarrow \\ \hline 10 \\ - 8 \\ \hline 20 \\ - 20 \\ \hline 00 \end{array}$$

Final answer: So, 2500 kg ^{of potatoes} used weekly.

③ You saved \$23.07 per month and put this \$ in the bank. How much have you saved in 6 months?

$$\begin{array}{l} \underline{1 \text{ month}} \quad \times 6 \quad \underline{6 \text{ months}} \quad (\frac{1}{2} \text{ year}) \\ 23.07 \quad \times 6 \quad ? \end{array}$$

$$\begin{array}{r} +23.07 \\ \times 6 \\ \hline 138.42 \end{array}$$

Final: You saved \$138.42!

④ You drove 350.8 km in 4 hours. How many km did you drive every hour?

$$\begin{array}{l} \text{4 hours} \quad \div 4 \quad \text{1 hour} \\ \hline 350.8 \text{ km} \quad \div 4 \quad ? \\ \hline \end{array}$$

87.7 km

$$\begin{array}{r} 087.7 \\ 4 \overline{) 350.8} \\ \underline{- 0} \downarrow \\ 35 \downarrow \\ \underline{- 32} \downarrow \\ 30 \downarrow \\ \underline{- 28} \downarrow \\ 28 \end{array}$$

final answer: So, 87.7 km driven each hour.

⑤ A coffee @ Starbucks costs \$6.15. MsT buys 6 coffees to give to her colleagues. How much did this cost? She paid with her Starbucks gift card.

$$\begin{array}{l} \text{1 coffee} \times 6 \quad \text{6 coffees} \\ \hline \$6.15 \quad \times 6 \quad ? \\ \hline \end{array}$$

\$36.90

$$\begin{array}{r} \\ 6.15 \\ \times 6 \\ \hline 36.90 \end{array}$$

final answer: She paid \$36.90!

⑥ The length of each side of a regular nonagon^{9 sides} is 3.5 cm. What is its perimeter?

$$\begin{array}{l} \text{1 side} \times 9 \quad \text{9 sides} \\ \hline 3.5 \text{ cm} \quad \times 9 \quad ? \\ \hline \end{array}$$

31.5 cm

$$\begin{array}{r} \\ 3.5 \\ \times 9 \\ \hline 31.5 \end{array}$$

final answer: Perimeter is 31.5 cm